



Picture: EA 9777-1USB

TECHNICAL DATA

- **EA 9777-1USB**
- PROGRAMMER WITH USB
- USB CABLE INCLUDED
- EASY INSTALLATION, USB DRIVER IS SUPPLIED
- NO EXTERNAL POWER SUPPLY REQUIRED

- **EA 9777-1V24**
- RS232 SERIAL PORT INTERFACE BOARD ($\pm 12V$ ON RxD AND TxD)
- CABLE KV24-9B WITH 9 PIN D CONNECTOR SUPPLIED
- EXTERNAL POWER SUPPLY REQUIRED +5V/max. 250mA

- **EA 9777-1485**
- INTERFACE BOARD FOR RS-485 2 WIRE CONNECTION
- EXTERNAL POWER SUPPLY REQUIRED +5V/max. 250mA

- **EA 9777-1**
- PCB ONLY FOR MOUNTING OF eDIP240-7

ORDERING INFORMATION

PROGRAMMER WITH USB CABLE FOR PC
RS-232 SERIAL PORT INTERFACE $\pm 12v$ ON TxD AND RxD
INTERFACE BOARD FOR R2-485 2 WIRE CONNECTION
PCB ONLY (FOR MOUNTING OF eDIP240-7)

EA 9777-1USB
EA 9777-1V24
EA 9777-1485
EA PLAT9777-1

MMS Electronics Ltd
South View Business Park
Ghyll Royd
Guiseley Leeds LS20 9LT
Tel : 01943 877 668
Fax: 01943 870 237

MMS-e

Web: www.mms-e.co.uk

EA 9777-1USB

This programmer can be directly connected to a PC with USB port. No power supply is required. The PCB has a buzzer fitted that can be used for touchkey indication or reset indication. The Power-On-Macro can be disabled with a jumper on the PCB. Supplied is a USB-cable and installation CD for Windows 2000, NT, XP and WIN98.

Installation: connect the programmer to the USB port of the PC. When message 'New hardware found' is displayed search for the USB driver on the CD rom in folder "\DRIVER\EA 9777-1USB". Then follow the instruction on the PC.



Communication with the EA KIT editor.

To establish communication with the display and programmer the following line is required in windows.

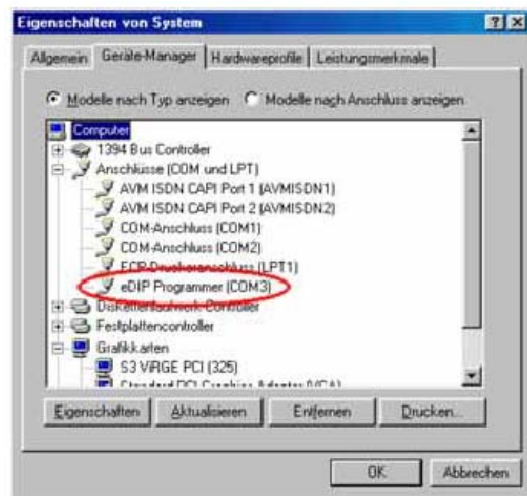
USB: "Edip Programmer"

In windows set baudrate to:

COMx: 115200

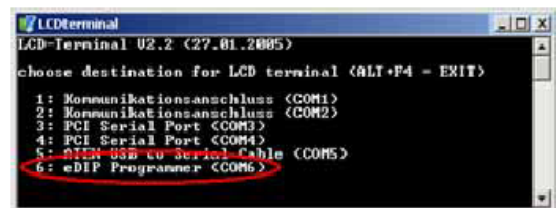
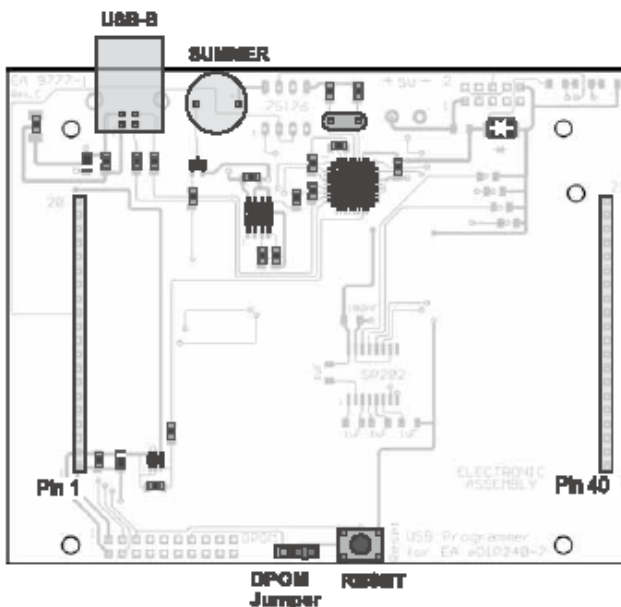
See settings windows device manager.

The programmer is now ready.



Communication with the EA LCD Terminal.

Start the EA LCD Terminal. Select number 6 for eDIP programmer. For Win-98 select the virtual com port that the USB programmer uses. See Windows device manager (as above) . The baud rate is 115.200 baud. Then start communication by Shift-F8

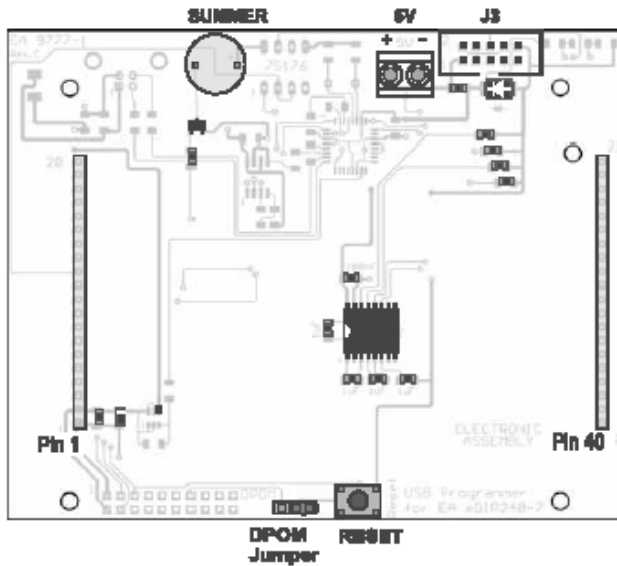


EA 9777-1V24

Board 9777-1v24 has an RS232 interface for direct communication between the $\pm 12V$ serial port of a PC or PLC. A 9 pin D connector KV24-9B interface cable 1.5 m is supplied.

Two screw terminal are provided for connection of the +5V max. 250mA supply. The baudrate factory settings are 115.200 baud (8 bits, no parity, 1 stop bit). The baud rate can be change by resoldering the onboard program links. The PCB has a buzzer fitted that can be used for touchkey indication or reset indication. The Power-On-Macro can be dissable with a jumper on the PCB.

| Baudraten | | | |
|-----------|-------|-------|----------------------|
| Baud0 | Baud1 | Baud2 | Datenformat 8,N,1 |
| 0 | 0 | 0 | 1200 |
| 1 | 0 | 0 | 2400 |
| 0 | 1 | 0 | 4800 |
| 1 | 1 | 0 | 9600 |
| 0 | 0 | 1 | 19200 |
| 1 | 0 | 1 | 38400 |
| 0 | 1 | 1 | 57600 |
| 1 | 1 | 1 | 115200 |



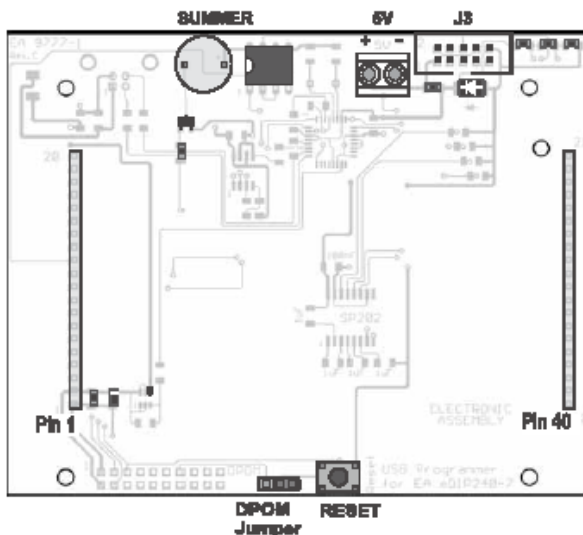
EA 9777-1V24

| RS-232 Connector J3 | | | |
|---------------------|--------|--------|----------------------|
| Pin | Symbol | In/Out | Function |
| 1 | VDD | - | + 5V Power |
| 2 | DCD | - | connected to pin 3,8 |
| 3 | DSR | - | connected to pin 2,8 |
| 4 | TxD | Out | Transmit Data |
| 5 | CTS | In | Clear To Send |
| 6 | RxD | In | Receive Data |
| 7 | RTS | Out | Request To Send |
| 8 | DTR | - | connected to Pin 2,3 |
| 9 | NC | - | no connection |
| 10 | GND | - | 0V Ground |

EA 9777-1485

With this board it is possible to connect multiple display EA eDIP240-7 to an RS-485 (2-wire) interface. Two screw terminal are provided for connection of the +5V max. 250mA supply.

The baud rate can be change by resoldering the onboard program links. (see table above). Termination resistors "10k-1k-10k" are soldered over both program links "termination". For further information check the display datasheet EA eDIP240-7.pdf The PCB has a buzzer fitted that can be used for touchkey indication or reset indication.



EA 9777-1485

| RS-485 Connector J3 | | |
|---------------------|--------|-------------------------|
| Pin | Symbol | Function |
| 1 | VDD | + 5V Power |
| 2 | - | connected to pin 3,8 |
| 3 | - | connected to pin 2,8 |
| 4 | Data+ | Transmit/ Receive Data+ |
| 5 | NC | no connection |
| 6 | Data- | Transmit/ Receive Data- |
| 7 | NC | no connection |
| 8 | - | connected to pin 2,3 |
| 9 | NC | no connection |
| 10 | GND | 0V Ground |

EA PLAT 9777-1

For PLAT 9777-1 a blank PCB with no display is supplied. The display can be soldered directly into the PCB or use sockets EA254-20 (2 required).

To mount the display 4 mounting holes (3.2mm) are provided on the PCB. Connection is provided for a 20 pin connector (2.54mm pitch) or a 20 pin ZIFconnector (1,0mm pitch - not supplied). Use partnumber EA WF100-20S to bottom contact of ZIF connector. The mating flex cable 110mm length is EA KF100-20.

