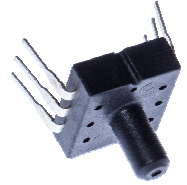


This Smartec pressure sensor has an amplified analogue output. The sensor is compensated for offset, sensitivity, temperature drift and nonlinearity.
 This sensor is available in 36 psi (=250 kPa) version. Other ranges on request.
 The output is ratiometric to the power supply voltage.
 At 5 V power supply the output span is 4.6 V.



Electrical Characteristics

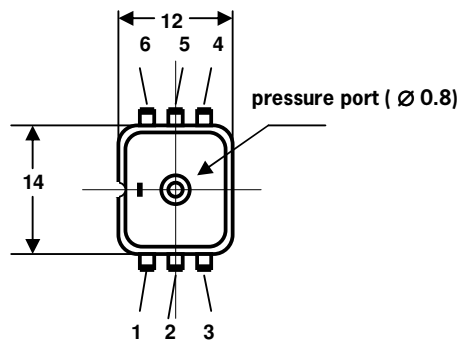
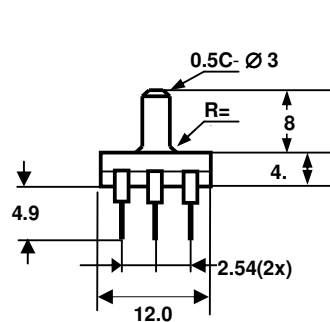
Performance Characteristic at Vcc =5V excitation @ 25 °C.

Parameter	Min	Typ	Max	Units
Supply Voltage	4.7	5	5.25	V
Supply Current	-	-	3.0	mA
Pressure range (fs)	20		250	kPa
Zero Output *)	0.117	0.2	0.282	Vdc
Span Output *)		4.60		Vdc
Linearity	-0.5		+0.5	%FS
Accuracy **)			1.8	%FS
Response time		1	2	ms
Pressure overload			3x	
Operating temperature	-20		85	°C
Storage temperature	-40		125	°C

Wetted materials are: Glass, RTV, PPA and silicon

*) Output is ratiometric to supply voltage

**) all errors included, temperature compensation over 50 °C



Pin	Description
1	Gnd
2	Out
3	Vcc
4	N.C.
5	N.C.
6	N.C.

Do NOT connect NC pins
 Apply 100nF between Vcc and Gnd.